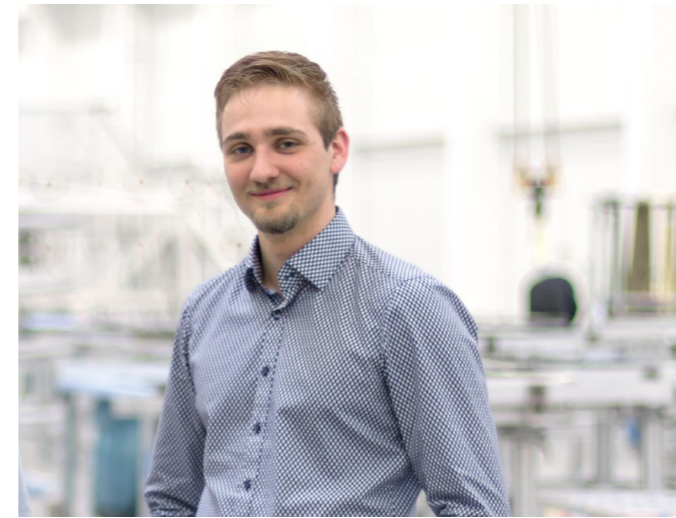


the plan for your career with
the façade specialist

seele

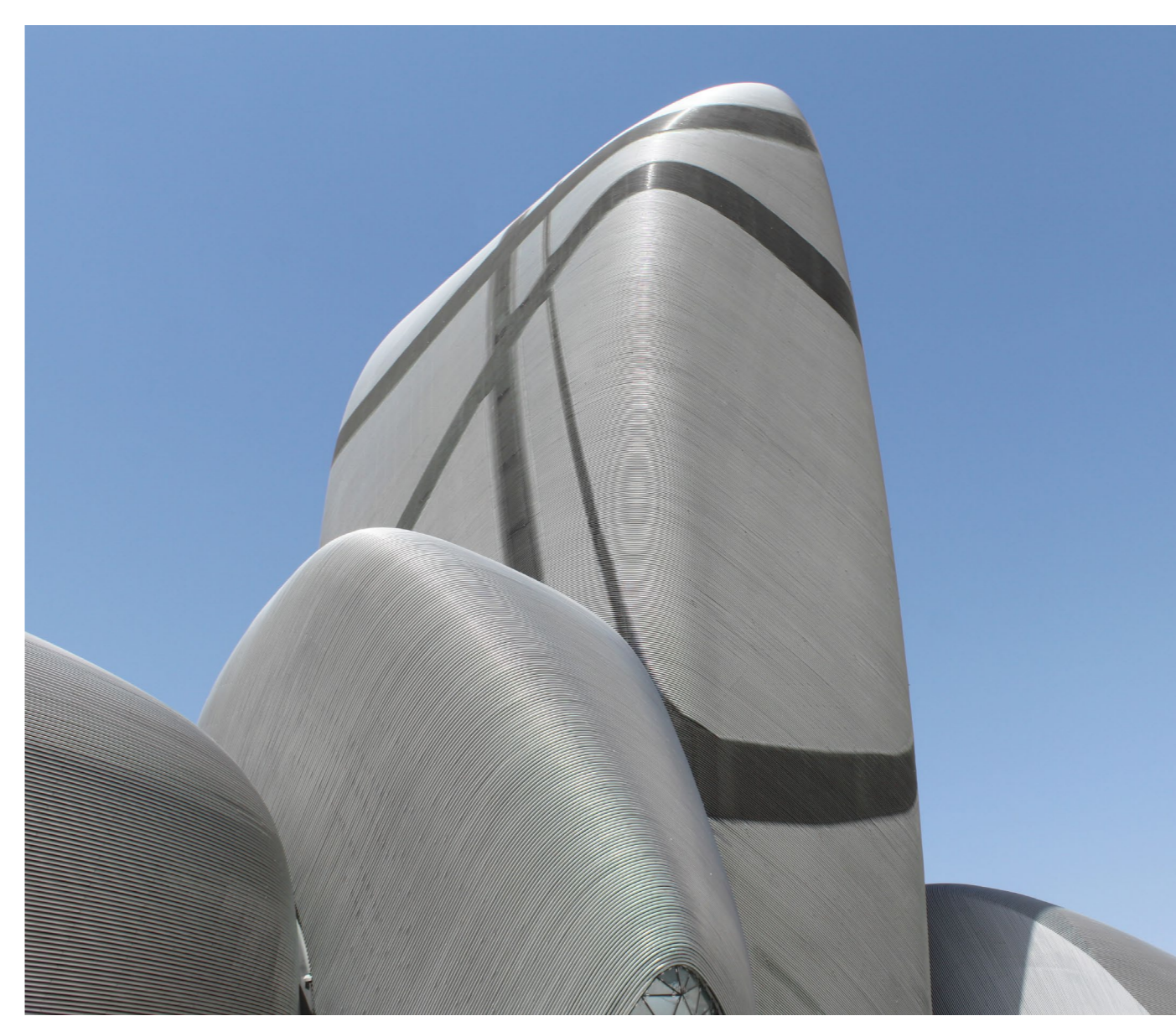
career at seele



»In direct cooperation with our designers, we look for potential improvements to optimise our façades in terms of building physics. For the roof of a railway station in New York, for example, I calculate characteristic values such as heat transition coefficients, solar factor and carry out condensation tests.«
Christian, Engineer Research & Development

Career at seele:
Working Student → Master thesis → Engineer Research & Development

← Unitised façade of the European Central Bank
in Frankfurt am Main



↑ Tube façade for the King Abdulaziz Center for World Culture in Dhahran, Saudi Arabia

»What I particularly like about my job is working on great projects. Furthermore, many components are manufactured in our own production so that the design we develop can be seen live.«

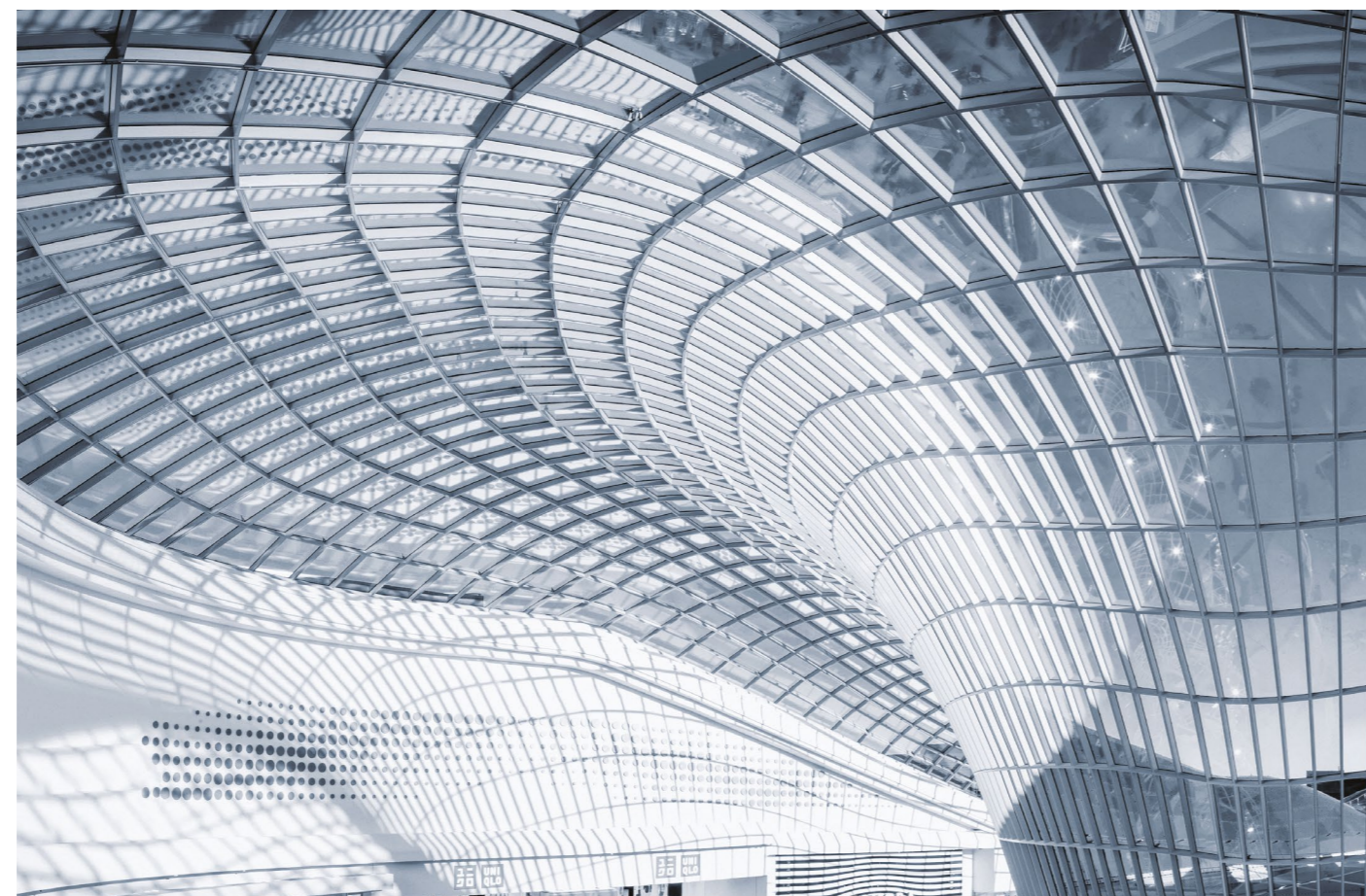
Magdalena, Project Coordinator

Career at seele:
Practical semester → Working Student → Project Coordinator



»For me, working at seele is very exciting. We work on the most complex glass and steel façades with state-of-the-art technology. It also gives me the opportunity to draw on seele's wealth of knowledge, because in sales we always have to be ready to answer the customer's questions, which can sometimes be very technical and detailed. This allows me to work cross-functionally to deliver results that meet the high demands of our clients.«
Antonio, Sales Manager

Career at seele:
Technical Sales Germany → Sales Manager New York



↑ Free-form gridshell roof for the Chadstone shopping centre in Melbourne, Australia



»What I particularly appreciate about my work as a site manager are the varied and exciting projects that always involve new tasks. In addition, I have already got to know many foreign countries and cultures through my work. The experiences and people I meet are irreplaceable.«
Gerd, Site Manager

Career at seele:
Practical semester → Installation and Site Management Assistant → Site Manager

Steel-and-glass design for the TEC Bridge in Toronto, Canada →



Copyrights:
EZB © European Central Bank/Robert Metsch
seele Headquarter © René Müller
TEC Bridge © Sight on Site Inc.
Chadstone © Vicinity Centers
Employees: © Peter Neusser/© HG Esch

seele

seele GmbH
Gutenbergstrasse 19
86368 Gersthofen



behind the façade of outstanding buildings is seele.

The seele Group of Companies is one of the leading suppliers of innovative roof and façade constructions. For the modern milestones of architecture, around 1,000 employees worldwide realize groundbreaking building envelopes. With the help of modern 3D planning and construction, seele creates a previously unthinkable freedom of design. Free forms, inclined facades and highly complex geometries - everything is possible.

With the latest technologies, such as laser scanning, 3D printing, BIM and VR, as well as digitalisation in production and assembly, seele is considered a pioneer in façade construction.

Apply now at:
www.seele.com

We look forward to meeting you!

We offer you:

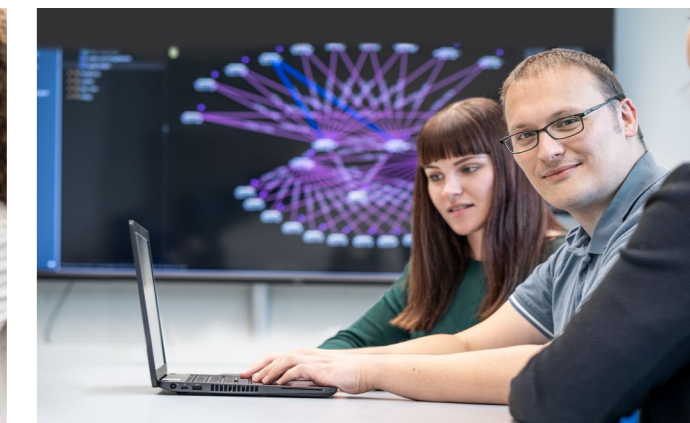
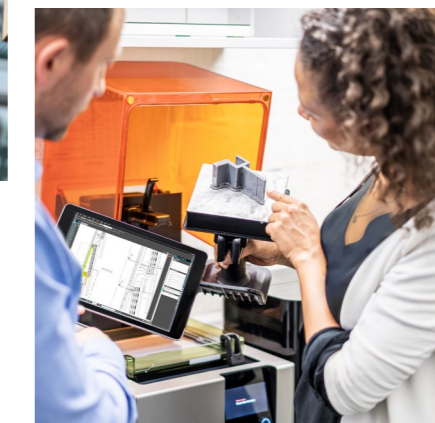
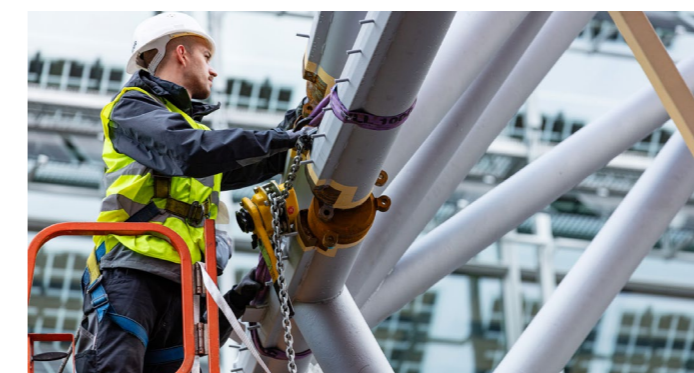
- Exciting projects that the architectural world is talking about
- Increased competence through leading know-how, training and further education
- Collegial climate with a living team spirit
- Flat hierarchies
- Flexible working hours
- Employee benefits such as bike leasing employee discounts
- A new staff restaurant
- Contribution to capital-forming benefits
- Modern workstations with the latest technology

offers for students:

Are you still looking for the right company for a working student job or your practical semester? Are you writing a thesis on an interesting topic that could suit seele? Then feel free to send us an unsolicited application via the application portal on seele.com.

work sectors at seele

we are looking for team players who act with energy and drive, think creatively and take responsibility.



project management_

Every Project needs people to overview and keep track. Their organisation skills ensure perfect processes – from planning the building envelope to installation. They act as the central interface for internal and external processes of all partners involved in the construction project.

production_

seele stands für special constructions from batch size 1 in high-quality workmanship, which is why our own production is irreplaceable. Our manufacturing competencies include machining, sheet metal working, welding, surface treatment, assembly and our own shipping department. Whether as a skilled worker, foreman or career changer (f/m/d), varied tasks await you here.

installation & maintenance_

Whether in the heart of the Saudi Arabian desert or in the middle of the metropolis New York - seele realises unique construction projects worldwide. Craftsmanship, team spirit and flexibility are what you need here when you are close to the action.

research & development_

No two projects are alike. That is why the spirit of innovation is a top priority at seele. In the area of research and development, you will test building physics correlations and research constructive dependencies for complex building envelopes.

IT_

At se commerce GmbH, the in-house IT company, experts create the hardware and software infrastructure for all locations and construction sites of the seele group of companies. This includes, among other things, the implementation of software interfaces, hardware configuration as well as the support and further development of the IT system landscape.

construction_

In the design department, you develop bespoke solutions according to customer requirements. Digital and three-dimensional planning is an essential part of the process of creating building envelopes - from the first approaches to detail drawings to production to assembly drawings.

administration_

You will also make a significant contribution to the realisation of demanding, challenging, international projects in the administrative departments. No matter whether you are involved in purchasing, controlling or sales: Every project brings new requirements that must be individually coordinated.