

press release

seele researches safe building control systems

The façade construction specialist is involved in the German research project "SHIQ" that addresses secure heterogeneous IoT systems in real estate and districts. seele is focusing on the integration of façades into building automation as part of a secure and digital ecosystem. The Federal Ministry of Education and Research is funding the project.

Gersthofen (Germany), April 08, 2024. To further improve façade technologies, **seele** has already been working on various interdisciplinary research projects. On November 15, 2023, the go-ahead was given for a new research programme in which the façade construction specialist is involved: Under the title "SHIQ", the project partners are working on a secure open source platform for building control.

Façades provide a valuable basis for building technology as well as energy and resource consumption. This is because building envelopes regulate solar radiation as well as solar energy gains and losses during heating periods. They also influence comfort through the natural light incidence.

Networking the building infrastructures

Until now, the various building control components have not been linked to each other and the façade has not been integrated into a secure and intelligent system architecture. Networked cloud cluster infrastructures are required to utilise potential savings and share data and services across buildings. This is where SHIQ begins.

Funded with 3.5 million euros by the German Federal Ministry of Education and Research, the research project is dedicated to creating an open platform for various Internet of Things (IoT) components in building technology by the end of 2026. The focus lies on IT security and protecting the privacy of residents.

ISOshade® from seele becomes a player

Thanks to its many years of expertise in the field of IoT systems in the construction industry, **seele** is a predestined partner for SHIQ. In addition, the company's product range already includes ISOshade®, a proven and smart façade element. The research results from SHIQ will later be tested using the sensors and actuators in ISOshade®. In addition to safety, aspects of longevity and sustainability also play an important role. For example, data on the façade can be used for predictive maintenance or AI-based control of the sun shading system can influence the heat input into the building as required.

press release

Interdisciplinary research team

Other project partners are Drees & Sommer SE as consortium partner as well as BSH Hausgeräte GmbH, BMK professional electronics GmbH, Ingenics Digital GmbH, the Fraunhofer Institute for Applied and Integrated Security, the Institute for Innovative Safety and Security at Augsburg Technical University of Applied Sciences and the Faculty of Architecture and Civil Engineering at Augsburg Technical University of Applied Sciences.

SPONSORED BY THE



Federal Ministry
of Education
and Research

press release

seele group

The **seele** group of companies, with headquarters in Gersthofen near Munich, is one of the world's top addresses for the design and construction of façades and complex building envelopes made from glass, steel, aluminium, membranes and other high-tech materials. The technology leader in façade construction was founded in 1984.

Based on a profound understanding of design and materials, **seele** realizes highly accurate unique projects for engineers and architects. The **seele** group offers its building sector and industrial customers a complete package of services, ranging from research and development, individual advice and joint conceptual design right up to the planning, detailed design and construction of their projects. **seele's** own production plants for technologically challenging designs and the group's own erection crews on site provide a guarantee of the very highest quality "made by **seele**".

About 1,000 employees work at the **seele** group's locations around the world, together generating an annual turnover of about €250 million.

Press contact

seele group

Christine Schauer

Head of Marketing

Phone: +49 821 2494 – 825

e-Mail: christine.schauer@seele.com

www.seele.com

press release

Visual material



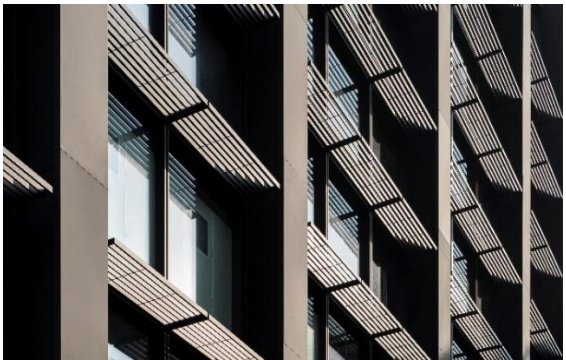
The "Principal Place Commercial" office building in London is one of many example projects with ISOshade® façade elements from **seele**.

© Nigel Young / Foster + Partners



The integration of façades into the building control system harbours great potential for efficient building operation.

© Nigel Young / Foster + Partners



SHIQ focuses on a secure, heterogeneous system architecture for building technology, into which the façade is also integrated. © Nigel Young / Foster + Partners